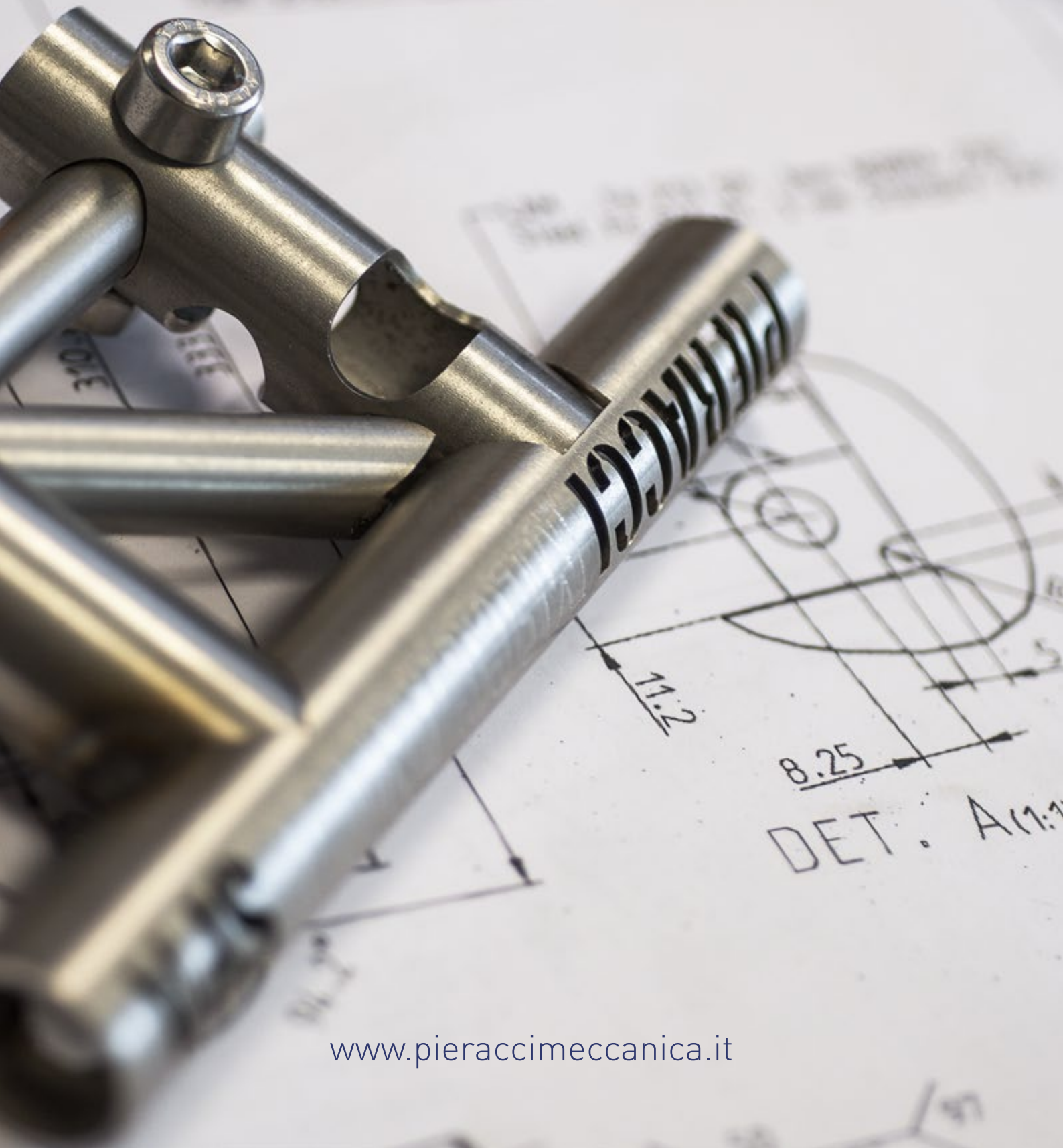




PIERACCI MECCANICA

THREE GENERATIONS PRODUCING QUALITY



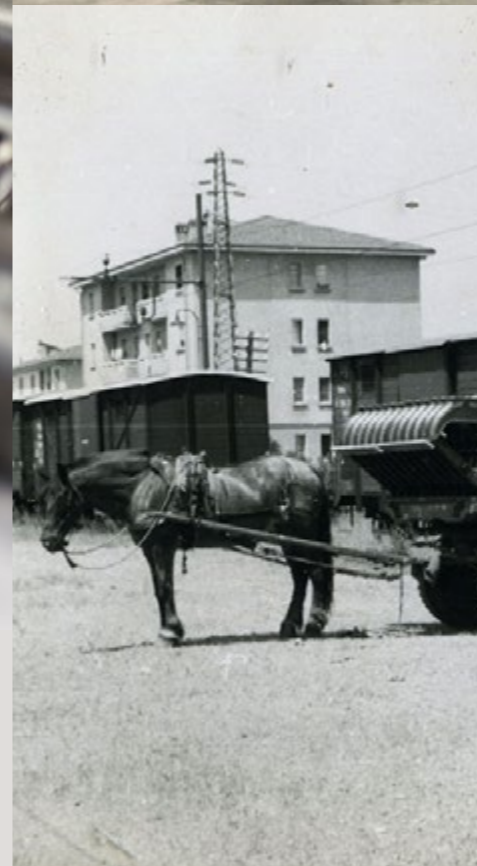
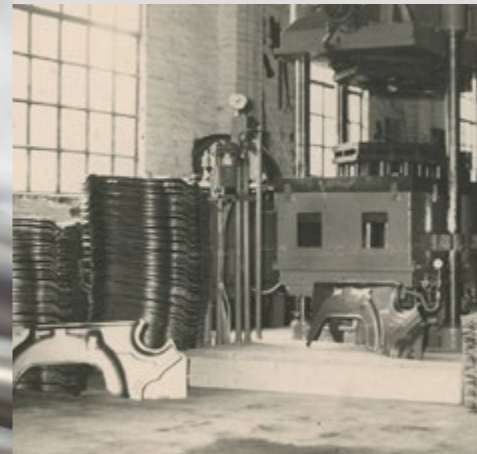
www.pieraccimeccanica.it



PIERACCI MECCANICA

OUR KEYWORDS ARE
QUALITY, TECHNOLOGY
AND CUSTOMER
SATISFACTION

PIERACCI MECCANICA HAS BEHIND AN
ORGANIZATIONAL STRUCTURE IN TERMS
OF DESIGN, PRODUCTION AND SERVICE
ACCORDING TO THE NEEDS OF EACH
CLIENT.



THREE GENERATIONS PRODUCING QUALITY

The firm was established at Follonica (Grosseto) in the 1930's and started off with the production of custom-built racing bicycle frames after a period spent as a selling agent for Edoardo Bianchi.

Production continued with motorized bicycles powered by "Cucciolo" engines until the 1950's, when the firm was transferred to Pontedera (Pisa) and began designing and constructing stamped-plate frames for Sachs and JLO engines, and for folding bicycles marketed in Holland, Germany and Denmark.

In the early 1970's Pieracci Meccanica moved to its current location at Fornacette (Pisa), where it carried out the industrialization and production of frames, forks, stands, etc. for Tomos (Koper - Slovenia), Bensow Solifer OY/AB (Helsinki - Finland) and Gilera - Piaggio (Arcore - Italy). After the 1980's, which were devoted to the production of moped and bicycle carriers on account of the socio-economic situation of the period, the activity of Pieracci Meccanica has been characterized by the manufacture of frames.



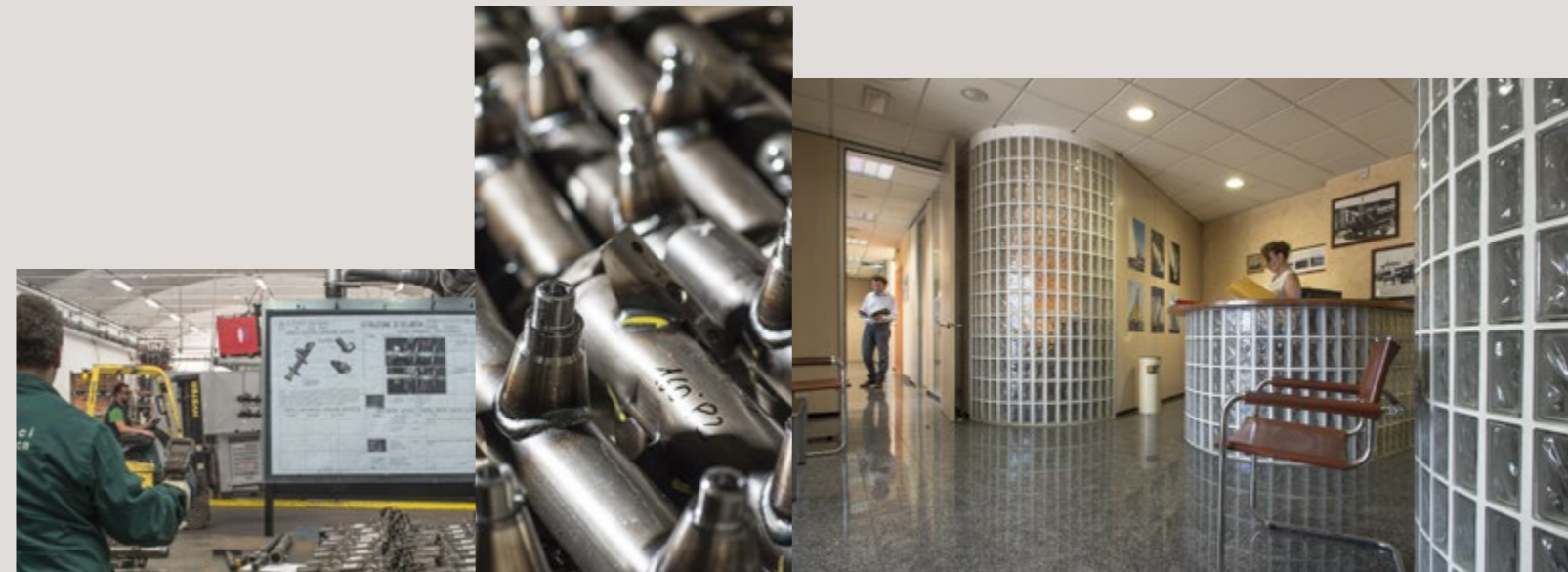


Technology and organization

COMPANY PROFILE

The present period is characterized by an excess of offer regarding the demand: in fact the request for technological innovation is very strong and the pressure of been global is also supported. Therefore, to afford this complex market it is essential for the company having a clear and precise strategy based on optimization of product development, manufacturing efficiency and quality with which to satisfy itself and the customer. The trump card of the success of Pieracci Meccanica has been and continues to be the quality of their products combined with technology development and production to

meet market needs and customer satisfaction. Flexibility and productivity are two concepts that were previously considered always in opposition. Today, however, customers are increasingly demanding these features together. In order to achieve appropriate solutions to customer requirements, a company must have an adequate organizational structure in terms of design, manufacture and service. The company is ISO 9001:2000 certified.



Pieracci Meccanica is headquartered in Fornacette Calcinai (Pisa) and is composed of several establishments where several activities take place such as:

- Raw materials inventory and cutting tube (2,000 sqm)
- Department cold forming of tubes and plates, bending pipe, machining machine tool (sqm 2,000).
- Prototyping and small series production floor (2,000 sqm)
- Equipment department, Metrology room (800 sqm)
- Automatic assembling frames and various special tube and sheet, administrative offices, logistics and planning. (sqm 5000)





Service and Support

PROTOTYPING

CAD STATION

All the construction for special tools and for single items of the project can be followed directly in prototypes area with a CAD station used by specialized workers for prototypes.

TOOLING/MACHINING AREA

This area is equipped with 3 milling machines and 1 CNC machine a turning machine and other classical machines (column drill, grinder, and so on).



ASSEMBLY

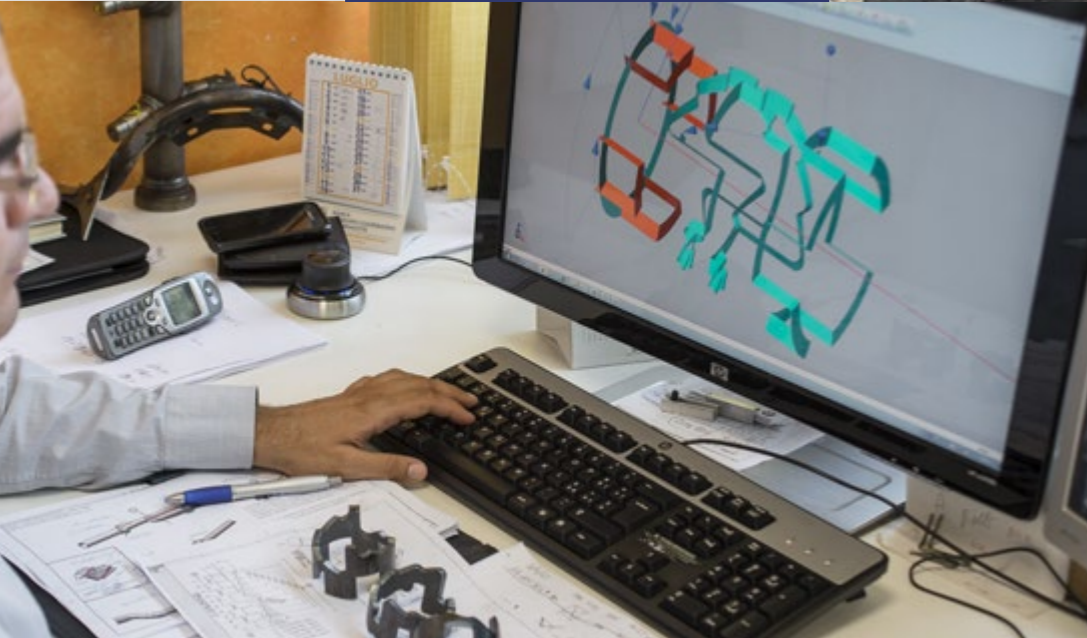
For the construction of complex items like frames, there are 2 double sided special workbench developed for mounting fastening structures necessary for assembling and welding.

WELDING AREA

There are various welding machines. A MIG/MAG synergic welding machine and a TIG welding machine (capable to weld different materials) are usually used for manual welding of prototypes.

MEASURING AREA

The prototyping area is directly connected to metrological department. This is very important for prompt dimensional checking of specials tools, frames, parts of frames. The metrological department is equipped with a 3d bridge measurement machine for frames and big item, and a 3d articulated arm for small items.



PHASES

Our technical office analyzes the composition (distinct) of the frame (or different structure) to be able to divide it into suitable parts for its achievement.

In this way it is defined the construction cycle for each part or similar sub-assembly to the standard construction cycle to validate the final stages during prototyping. The method of manufacture of the parts changes according to the type:



**Our trump card
the flexibility**

SERIES

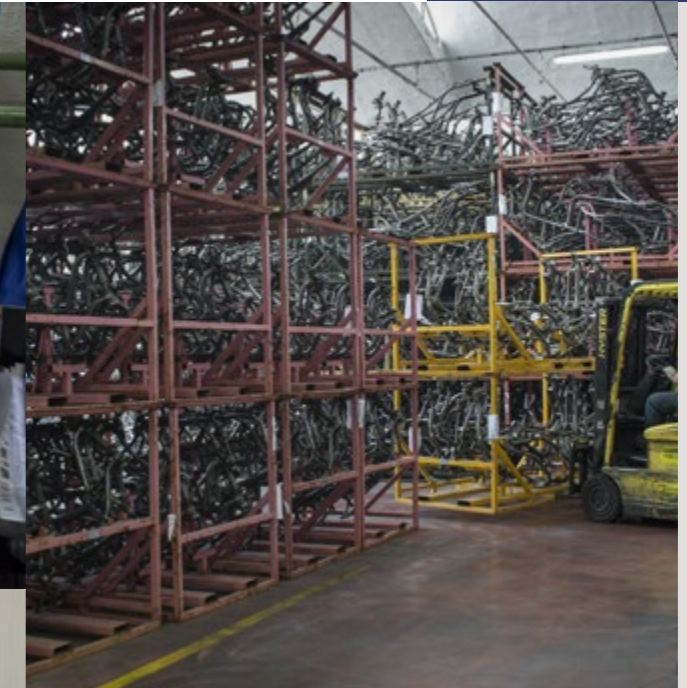
Technology and Organization:

- 30 ROBOTIC WELDING ISLANDS
- MACHINE FOR LASER CUTTING
- 11 STATIONS FOR MANUAL WELDING MIG / MAG
- THREE-DIMENSIONAL SELF-LEARNING MACHINE
- 6 HYDRAULIC BENDING CNC
- PORTABLE MEASURING ARM WITH HIGH-PERFORMANCE COORDINATE
- SAMPLING MOLDS/EQUIPMENT
- QUALITY CONTROL
- STORAGE
- LOGISTICS



We also have:

- 5 boring two opposing heads for processing of dinghies steering
- 1 set of welders cabinets for complex structures
- 1 group of hydraulic machine for tube bending
- 1 group eccentric presses for sheet molding with capacity from 20 to 150 tons
- 2 lines of CNC pipe cutting





PIERACCI MECCANICA S.p.A.

C.F. e Part I.V.A. 00459340501

OUR OFFICE:

Via E. Fermi, 32 56012 Fornacette (Pisa)

CONTACT:

Phone: +39 0587-420269

Fax: +39 0587-420238

Email: pieracci@pieraccimeccanica.it

www.pieraccimeccanica.it

